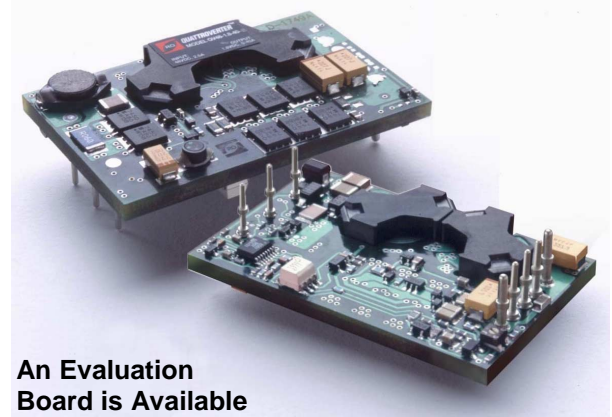




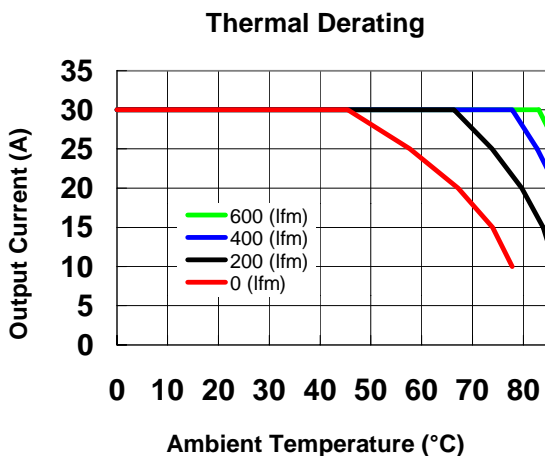
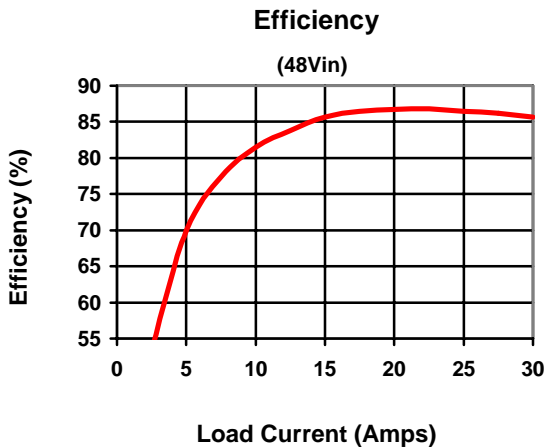
QUATTROVERTER™

30A DC-DC CONVERTER MODEL: QV48-1.8-30-1 DATA SHEET

- INPUT: 36 – 75VDC
- OUTPUT: 1.8VDC @ 30A



An Evaluation Board is Available



FEATURES

- 30A Output Current
- Standard Quarter Brick Package
- High Efficiency: 86%
- Fast Transient Response
- Extended Thermal Performance – No Heat Sink Required
- Light Weight – SMT Version Available
- Recovers Automatically from all Protection Modes
- Trim Range: 80 to 110%
- Remote Sense
- Constant Frequency
- Meets Basic Insulation Requirements of EN60950

DESCRIPTION

The QUATTROVERTER QV48-1.8-30-1 is a member of RO's quarter-brick family of dc-dc converters. The QUATTROVERTER family builds on the industry leading expertise of the half-brick size SYNCROVERTER family to squeeze the performance of most industry standard half brick converters into a quarter brick package. This family uses improved techniques in synchronous rectification, electrical and mechanical design, and automated production to provide up to 30Amps of 1.8Vdc power. Their advanced open frame design allows them to be reliably operated in a typical application without a heat sink. The QUATTROVERTER family is available in both thru-hole and SMT packages.

QUATTROVERTER™ DC-DC Converters

MODEL: QV48-1.8-30-1

ABSOLUTE MAXIMUM RATINGS

Exceeding absolute maximum ratings may cause permanent damage and may reduce reliability

PARAMETER	MIN	MAX	UNITS	CONDITIONS
Continuous Input Voltage (+In to -In)	-0.3	75	Vdc	
Transient Input Voltage (+In to -In)	-0.3	80	Vdc	Up to 100ms
On/Off Voltage (On/Off to -In)	-0.3	40	Vdc	
Storage Temperature	-40	+125	°C	
Operating Temperature	-40	+85	°C	Ambient
Soldering Temperature (Wave Solder)		+260	°C	< 5 sec.

SPECIFICATIONS

Specifications apply with 48Vin, full load, 25°C unless indicated otherwise.

INPUT PARAMETERS	MIN	TYP	MAX	UNITS	CONDITIONS
Input Voltage	36	48	75	Vdc	
Startup Voltage	33	34	35	Vdc	
Shut Down Voltage	30.5	32	33	Vdc	
Maximum Input Current			2.5	A	V _{in} = 36V

OUTPUT PARAMETERS	MIN	TYP	MAX	UNITS	CONDITIONS
Voltage Set Point	1.77	1.8	1.83	Vdc	48V _{in} , Full Load
Load Regulation		1	4	mV	0 A to Full Load, at any V _{in} within range
Line Regulation		1	4	mV	Over V _{in} range
Voltage Drift w/Temperature			0.02	%/°C	-40 to +100 °C
Ripple		75	150	mV p-p	5Hz to 20 MHz, at any V _{in} within range, C _{ext} = 10µF tantalum + 1µF ceramic
Rated Current	0		30	A	
Current Limit Inception	110	120	133	% F.L.	V _{out} = 95% V _{out} nominal
Short Circuit Current			170	% F.L.	V _{out} = 250mV
Transient Response Peak Deviation Settling Time		90 100		mV µsec	Load change from 50% to 75% full load Slew rate = 1A/µsec V _{out} within 1% V _{out} nominal
External Load Capacitance	0		30,000	µF	
Efficiency (See Curve)		86		%	48V _{in} , 3/4 Load

QUATTROVERTER™ DC-DC Converters

MODEL: QV48-1.8-30-1

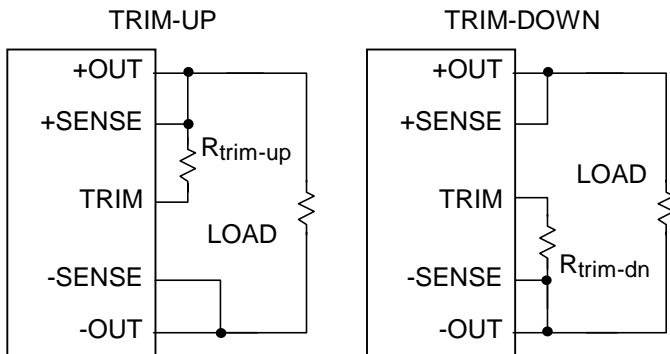
SPECIFICATIONS (continued)

ISOLATION PARAMETERS	MIN	TYP	MAX	UNITS	CONDITIONS
Input/Output Isolation			1500	Vdc	
Input/Baseplate Isolation			1500	Vdc	
Output/Baseplate Isolation			500	Vdc	
Input-to-Output Capacitance		50		pF	
Input-to-Output Resistance	10			M Ohms	

MECHANICAL PARAMETERS	MIN	TYP	MAX	UNITS	CONDITIONS
Weight	35 (1.24)			g (oz.)	
Size	2.3 x 1.45 x 0.42			Inches	

FEATURE PARAMETERS	MIN	TYP	MAX	UNITS	CONDITIONS
Trim Range	-20		+10	%	
Over Voltage Protection (Non-Shutdown, Auto. Recovery)	115	120	140	% V _{out} (nom)	OVP threshold does not change when V _o is trimmed
Over Temperature Shut-down (Automatic Recovery)		120		°C	PCB temperature
Turn-On Time		12	20	msec	80% F.L., V _{out} within 1%
Logic On/Off					
Logic Low	0.5			V	V _{out} = 0
On/Off Source Current		2		mA	@V _{on/off} < 0.5V
Logic High			15	V	
On/Off Sink Current			50	µA	@V _{on/off} = 15V
Logic Turn-On Time		12		msec	80% F.L., V _{out} settled within 1%

TRIM CIRCUIT CONFIGURATIONS



TRIM RESISTOR CALCULATIONS

(Standard Trim)

$$R_{\text{trim-up}} = \left(\frac{5.11 \cdot V_o \cdot (100 + \Delta\%)}{1.225 \cdot \Delta\%} - \frac{511}{\Delta\%} - 10.2 \right) \cdot \text{k}\Omega$$

$$R_{\text{trim-dn}} = \left(\frac{511}{\Delta\%} - 10.2 \right) \cdot \text{k}\Omega$$

Where:

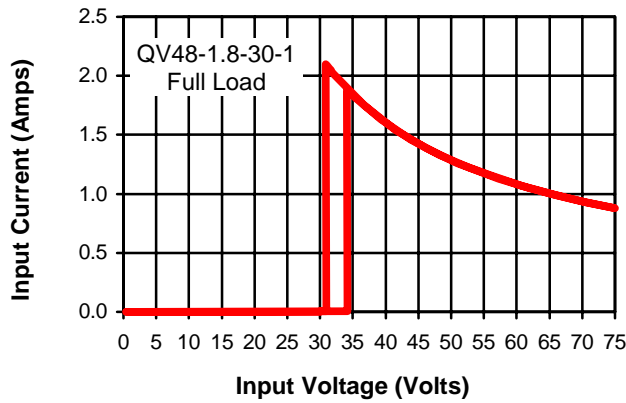
V_o = The nominal output voltage of the module with no trimming.

Δ% = The desired percentage change in the output (Δ% is always a positive number).

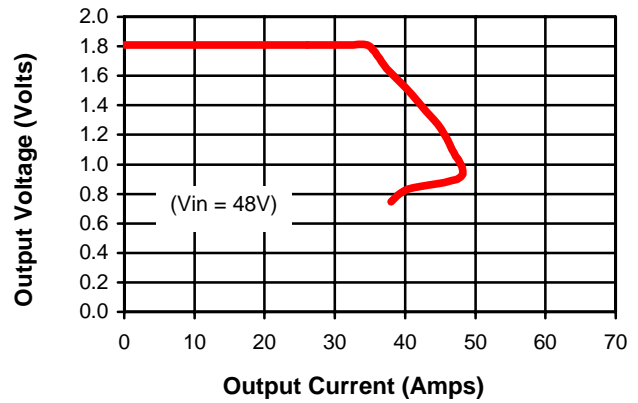
QUATTROVERTER™ DC-DC Converters

MODEL: QV48-1.8-30-1

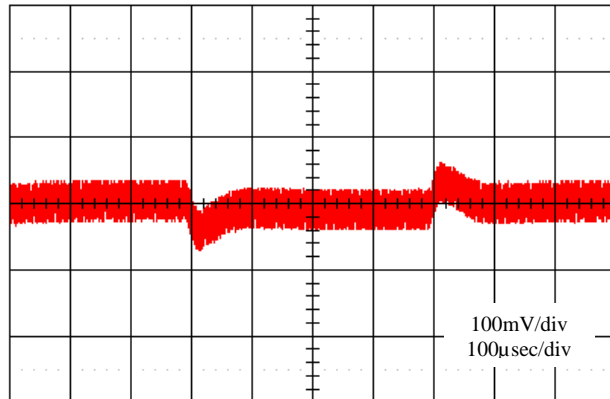
Input Characteristics



Output Characteristics



Transient Response



$I_{out} = 15A - 22.5A - 15A$
Current Slew Rate = $1A/\mu s$

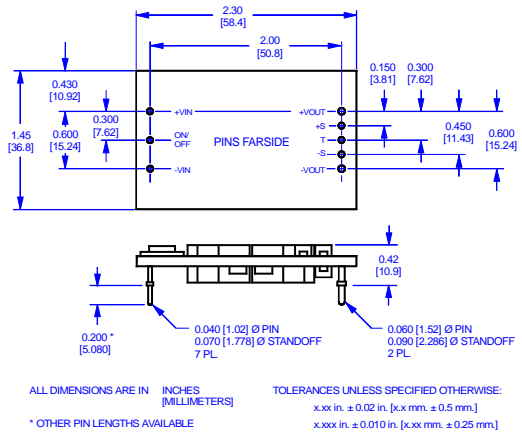
Part Numbering Scheme

Converter Family	V_{in} (nom)	V_{out} (nom)	I_o (rated)	Logic options	Pin options
QV	48	1.8	30	1	
QuattroVerter Series	48V nom. 36V - 75V	1.8V output	30A rating	blank = pos. logic 1 = neg. logic (std.)	Blank = 0.200 PTH (std.) 6 = 0.145 PTH 8 = 0.110 PTH SMT = SMT Option

Available Options

- Negative Logic** – The On/Off pin must be low to turn the module on. If it's left floating, the module turns off. This is the standard logic configuration.
- Positive Logic** – The On/Off pin must be high to turn the module on. If it's left floating, the module turns on.

Outline Drawing



(minimum quantities and extended lead-times may apply to orders of non-standard options)

RO Associates, Inc.
P.O. BOX 61419
Sunnyvale, CA 94088

www.roassoc.com
rev 030219
email:sales@roassoc.com

800-443-1450
408 744-1450
fax: 408 744-1521